



School Health Management Solution (SHMS)

A mobile management system to support the delivery of primary health care services at schools.

School Health Management Solution– An Overview

The Requirement

The World Health Organization (WHO) defines a school health programme as a combination of services ensuring the physical, mental and social well-being of learners so as to maximize their learning capabilities. The challenge is to ensure that learners receive timeous primary healthcare.

Solution

Mezzanine's School Health Management Solution's (SHMS) customized mobile application is used in support of primary health care at schools. It provides for:

- Learner registration.
- Maintenance of basic Integrated School Health Programme (ISHP) service records.
- Support of administrative decisions regarding follow-up and patient referrals to primary health care.
- Consolidation of information for intelligent decision support.

Benefits

- Comprehensive school primary health care management and administration.
- Real-time visibility of service records.
- Sound communication amongst all stakeholders.
- Meaningful strategic planning based on aggregated data.

How The School Health Management Solution Works

A stylized illustration of a dental examination. On the left, a person's head is shown in profile, facing right, with their mouth open. On the right, a hand holds a dental mirror, reflecting the person's teeth. The background is a light blue gradient with faint, larger-scale versions of the dental illustration.

School Health Management Solution (SHMS) is a mobile application which is used in support of primary health care at schools. School Health Teams (SHTs) use SHMS to register learners and assess their health status. During the clinical assessment, the SHT identify individuals with possible health risks and refer them to the Mobile Health Team (MHT) for further clinical intervention. Using the mobile application, the MHT identifies which learners have been referred to them and render the required clinical intervention to the learner during school visits and use the application to record the details of the care rendered.

SHMS also provides for aggregated data and vehicle tracking on a national, provincial and district level to assist with planning and to manage service delivery.

Key Features

1. Learner profile and registration:

- Capture learner registration information using a secure mobile application.
- Capture learner's parent's consent.
- Build the learner profile over time.

2. School profile and registration:

- Capture school registration information and GPS location using a secure mobile application.
- Bulk data upload via web application or CSV file import.

3. Reporting:

- Escalate and make the captured data available to authorized users through geo-spatial representations, (information about the school, for example) graphs and heat maps (graphical representations of data using colours to indicate the level of activity).
- Download reports in PDF, XLS or HTML format.
- Configure automated e-mail reporting to stakeholders as per an agreed schedule.

- Provide real-time reports to web and mobile users.
- Based on agreed measurements, update stakeholders on progress on how users adopt and utilise SHMS as a tool.

4. Administration:

- The system administrators invite stakeholders using their mobile numbers.
- The system administrators configure the solution via a main menu.
- Add SHT and MHT groups by geographic location.

5. Appointment scheduling:

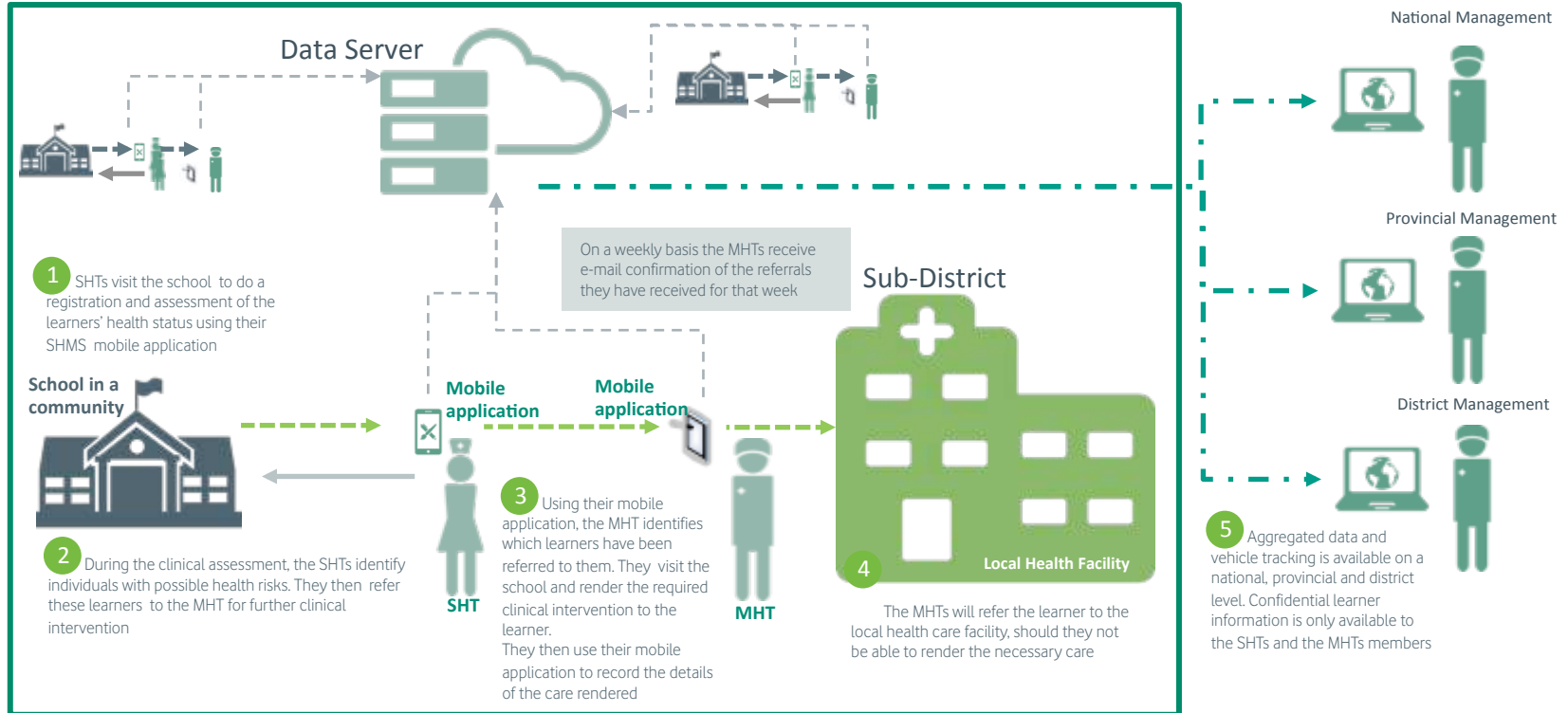
- Schedule appointments with the schools.
- Schedule learner appointments within a group or across groups.
- Send appointment notifications via SMS.

6. Clinical data capturing:

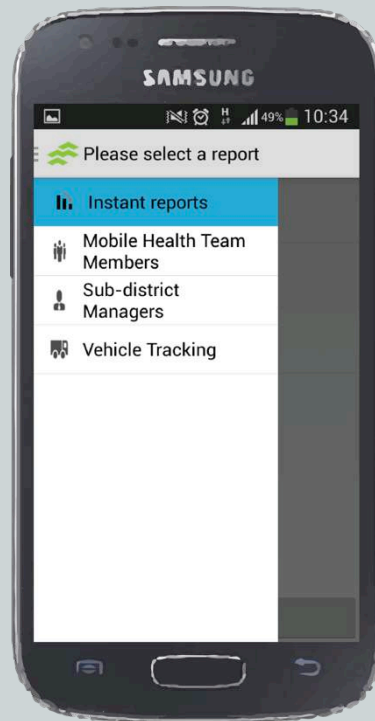
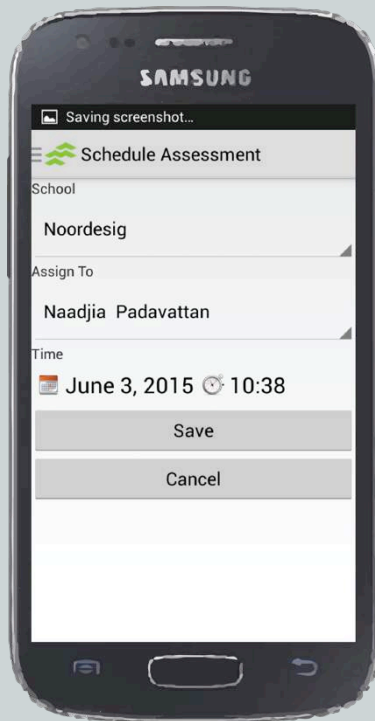
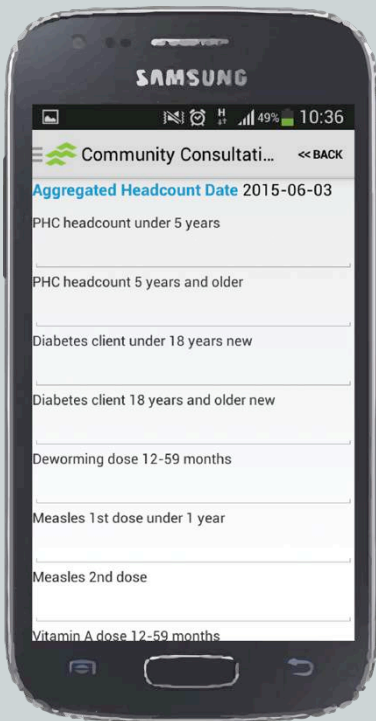
- Capture details of treatment rendered to the learner.
- View learners, treatment and care rendered by various health team members.

School Health Management Solution Ecosystem

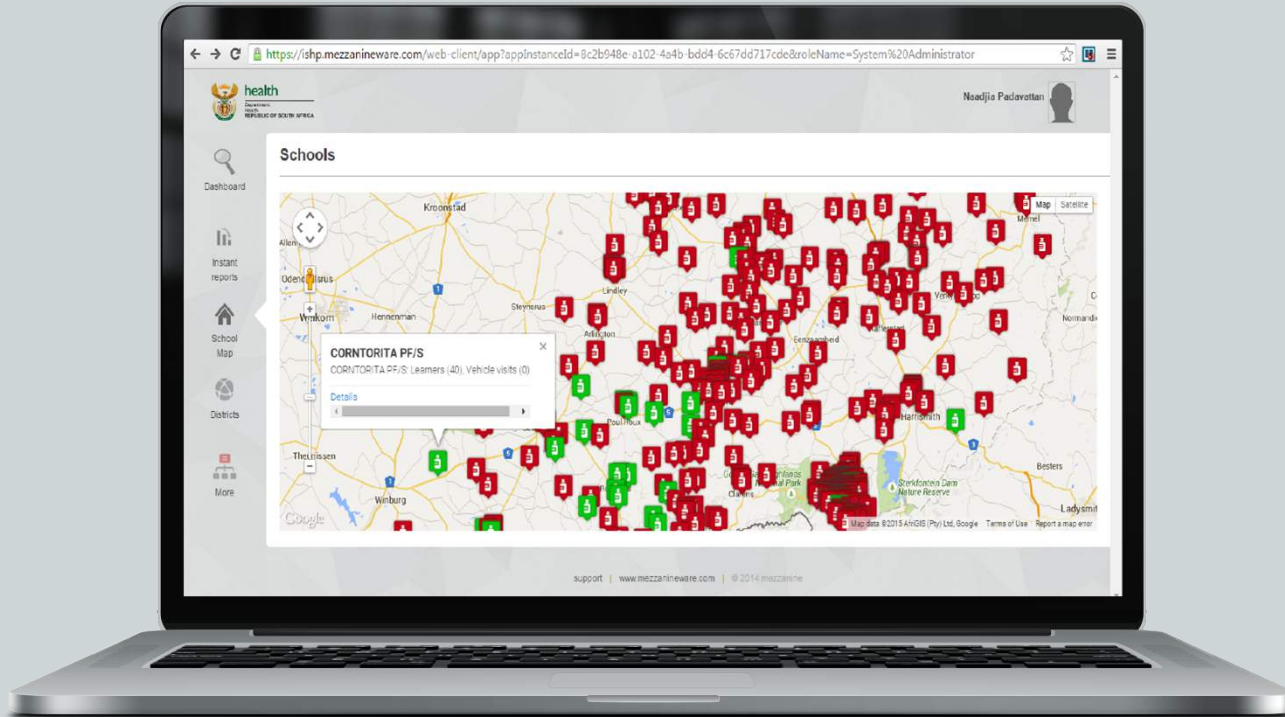
District



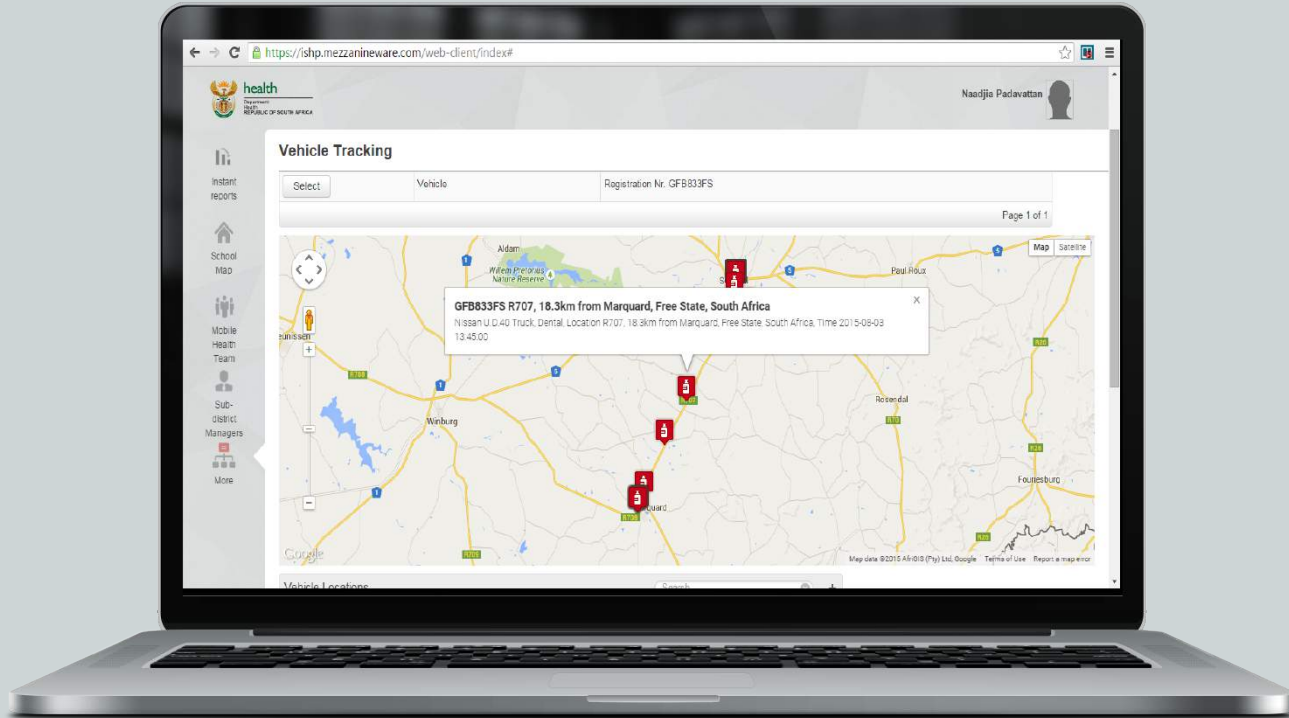
SHMS Mobile Application



SHMS Web Application



SHMS Web Application



LIFE ORIENTATION

School Health Management Solution

Providing a functional primary health care management system for government to improve in health and education service delivery for all.

For more information contact:

Naadjia Padavattan

+27 (0)21 880 2033 / +27 (0)83 256 8109

npadavattan@mezzanineware.com

Visit our web site for more solutions
www.mezzanineware.com

